

BioStation 2

Fingerprint IP Access Terminal



BioStation 2 incorporates the latest Suprema technology in a beautiful exterior. It combines a new powerful processor. Suprema's next generation optical sensor and improved fingerprint sensing & capturing algorithm to offer unrivaled performance. BioStation 2 provides users with instant authentication and rapid data transfer to manage high volume data with ease. It is ideal for applications that requires versatility without compromise in style and performance.

BioStation 2

Fingerprint IP Access Terminal

Features



Instant Matching & Authentication

- Improved matching algorithm, memory handling and powerful processor up to 20,000 matches per second



Rapid Data Transfer

- Optimal data transfer between the server and the device to transfer up to 5,000 user data in under a minute



Expanded Memory Capacity

- 1,000,000 fingerprint template
- 3,000,000 event logs



IP65 Certified Dust & Water Protection

- Ideal for harsh environment and outdoor installation



Versatile Interface

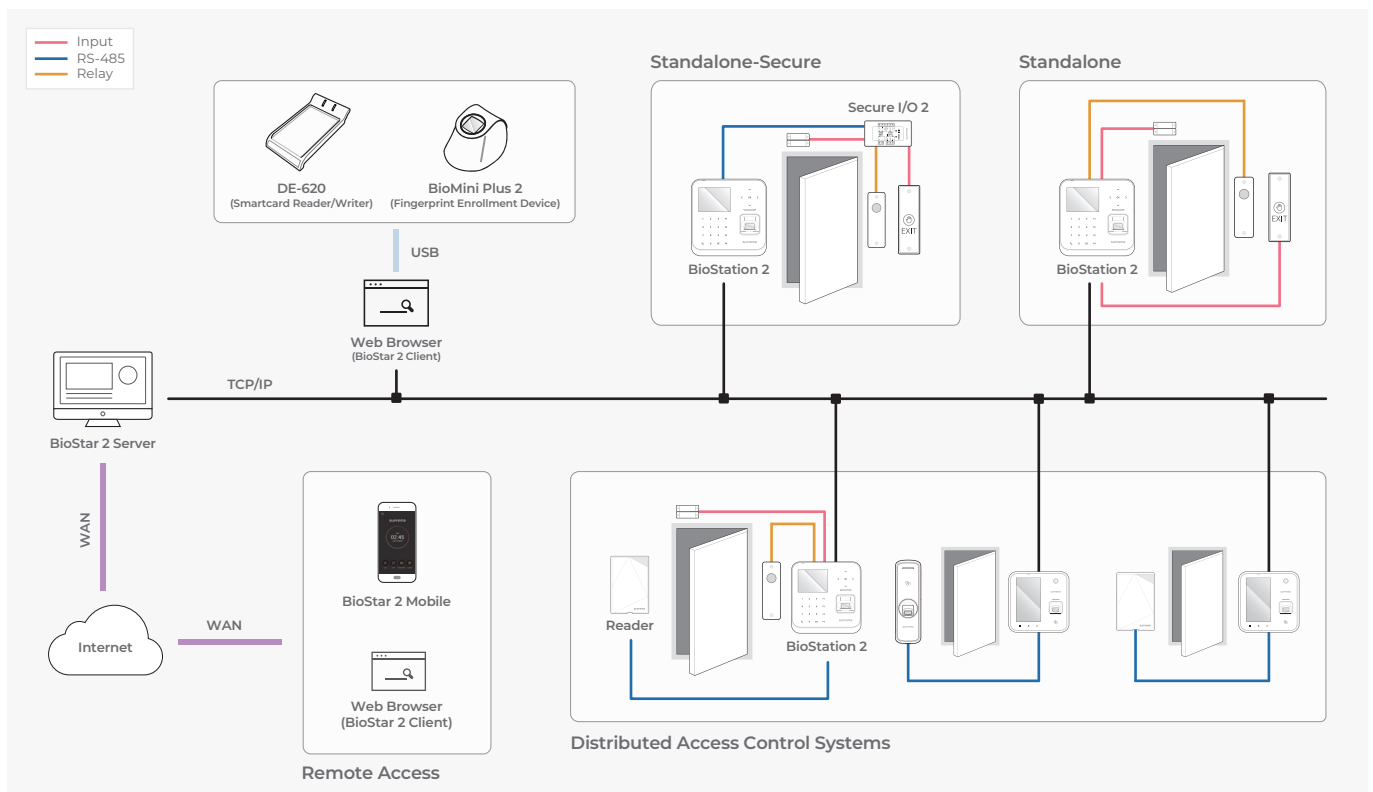
- Built-in WiFi and Power-over-Ethernet functionality for wide range of installation options

Specifications

Biometric	Fingerprint								
Sensor Type	Optical Sensor (OP5)								
Template	SUPREMA / ISO 19794-2 / ANSI 378								
Extractor / Matcher	MINEX certified and compliant								
LFD	Not Supported								
RF Option	<table border="1"> <thead> <tr> <th>BS2-OEPW</th> <th>BS2-OHPW</th> <th>BS2-OIPW</th> <th>BS2-OMPW</th> </tr> </thead> <tbody> <tr> <td>125 KHz EM</td> <td>125 KHz HID Prox</td> <td>13.56MHz MIFARE, MIFARE Plus, DESFire EV1/EV2, FIDELIA, ICCLASS SE50, NFC, ISO14443A/B, ISO15693</td> <td>13.56MHz MIFARE, MIFARE Plus, DESFire EV1/EV2, FIDELIA, NFC, ISO14443A, ISO15693</td> </tr> </tbody> </table>	BS2-OEPW	BS2-OHPW	BS2-OIPW	BS2-OMPW	125 KHz EM	125 KHz HID Prox	13.56MHz MIFARE, MIFARE Plus, DESFire EV1/EV2, FIDELIA, ICCLASS SE50, NFC, ISO14443A/B, ISO15693	13.56MHz MIFARE, MIFARE Plus, DESFire EV1/EV2, FIDELIA, NFC, ISO14443A, ISO15693
BS2-OEPW	BS2-OHPW	BS2-OIPW	BS2-OMPW						
125 KHz EM	125 KHz HID Prox	13.56MHz MIFARE, MIFARE Plus, DESFire EV1/EV2, FIDELIA, ICCLASS SE50, NFC, ISO14443A/B, ISO15693	13.56MHz MIFARE, MIFARE Plus, DESFire EV1/EV2, FIDELIA, NFC, ISO14443A, ISO15693						
CPU	1.0 GHz Single Core								
Memory	8GB Flash + 256MB RAM								
Max. User	500,000 (1:1), 20,000(1:N)								
Max. Template	1,000,000(1:1), 40,000(1:N)								
Max. Logs	3,000,000(text)								
LED	Multi-Color								
Sound	16-bit Hi-Fi								
Ethernet	Supported (10/100 Mbps, auto MDIX)								
RS-485	1ch Host or Slave (Selectable), OSDP V2.1.6								
Wiegand	1ch Input, 1ch Output								
TTL	2ch Inputs, 2ch Outputs								
Relay	1 Relay								
PoE	Supported (IEEE 802.3af compliant)								
Tamper	Supported								
Power	Voltage: DC 12V Current: Max. 1A								
Operating Temperature	-20°C ~ 50°C								
Operating Humidity	0% ~ 80%, non-condensing								
Dimensions (WxHxD, mm)	142 x 145 x 45 mm								
Unit Weight	440g								
Certificates	CE, FCC, KC, RoHS, REACH, WEEE								

* DESFire EV2 cards are supported by having backward compatibility of DESFire EV1 cards. CSN and smart card functions are compatible with BioStation 2.

System Configurations



Suprema Inc.

177 Parkview Tower, 248, Jeongjail-ro, Bundang-gu, Seongnam-si, Gyeonggi-do, 13554, Republic of Korea
 T +82 31 783 4502 E sales_sys@supremainc.com www.supremainc.com



For more information about Suprema's global branch offices, visit the webpage below by scanning the QR code.
<https://www.supremainc.com/en/about/contact-us.asp>